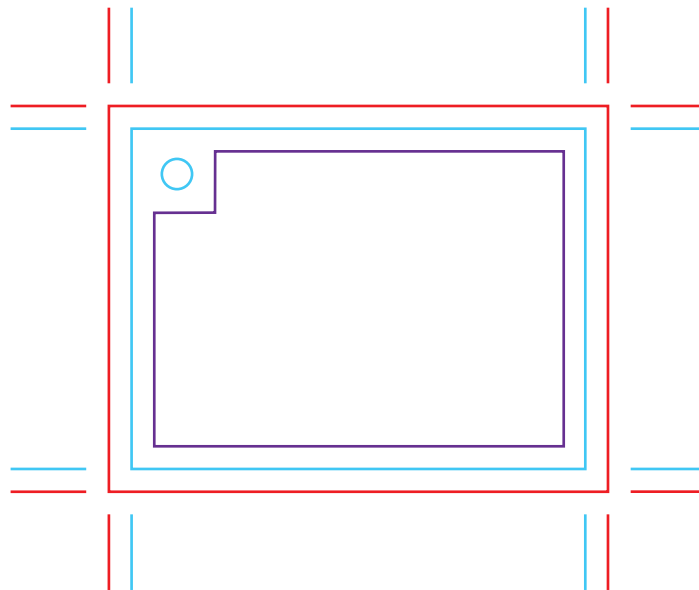


Front



**SWING TAG CUT
& HOLE**

**MAIN
ARTWORK
AREA - PLEASE
ENSURE ALL TEXT
IS A MINIMUM OF
3MM IN FROM CUT
LINE**

**ARTWORK
AREA (with 3MM
bleed)**

Back



Main Body Artwork is to be included within these lines. This includes essential parts of images and all text and logos.

A 3mm bleed must be included on all sides of cut.

Green line indicates approximate location of folds.

Contact details are required on the finished product. The minimum requirement is company name and address. They can be placed anywhere you want. We usually put them before the ingredients. Artwork submitted without contact details on will be slower to receive a proof and may even result in a surcharge.

The artwork layer of this document will be printed as it is submitted. Please make sure any fonts on this layer are converted to outlines (excluding the ingredients so that the lot, BBE and product code can be changed).

COLOUR

All artwork is printed on our CMYK digital press.

By approving this artwork, you are confirming that you have the right to use all intellectual property contained within.